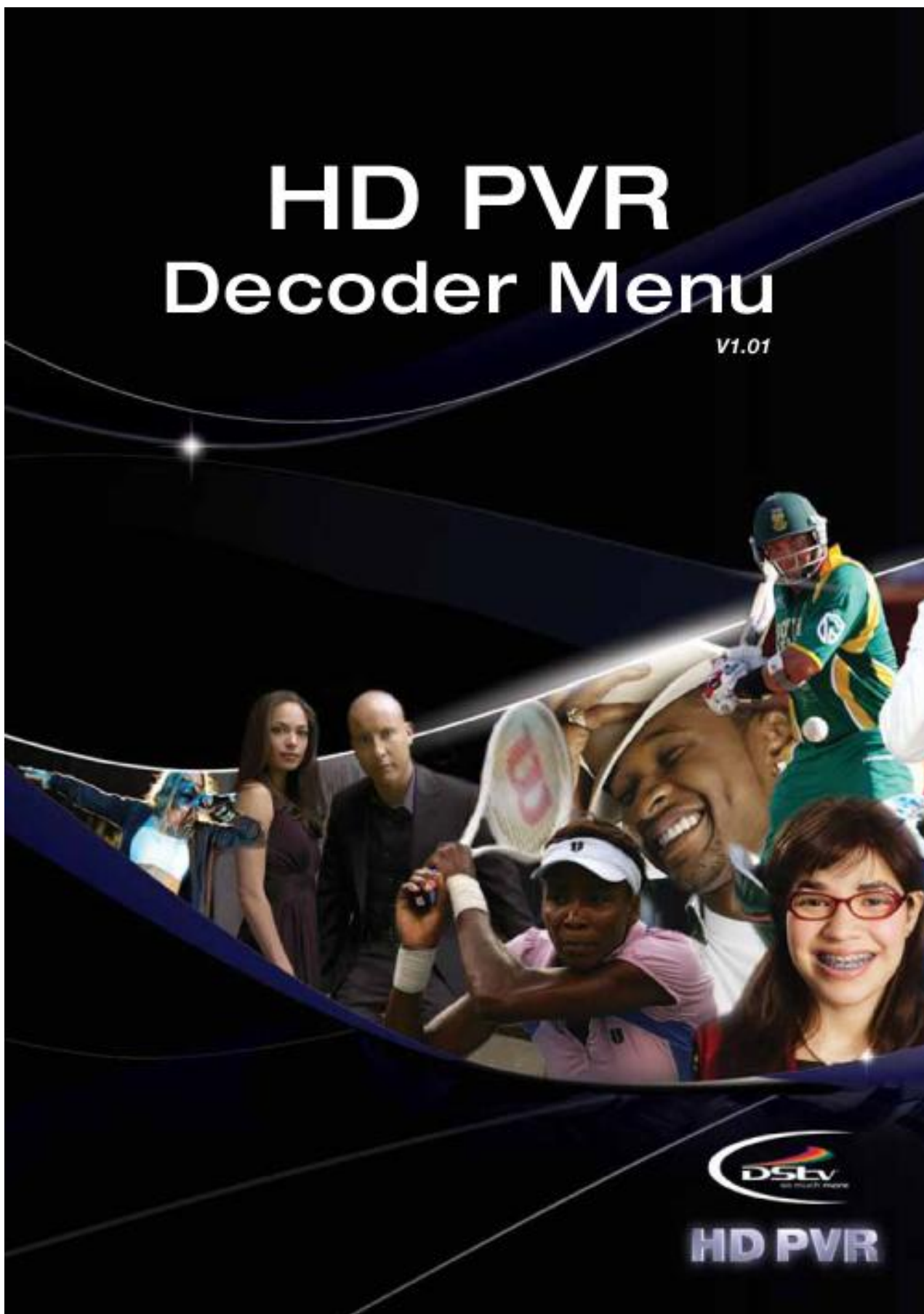


HD PVR Decoder Menu

V1.01



DStv
NO BOUNDARIES

HD PVR

TABLE OF CONTENTS

1	DECODER MENU – MAIN MENU	3
2	DECODER MENU – (1) INFORMATION CENTRAL	4
2.1	INFORMATION CENTRAL MENU	4
2.2	INFORMATION CENTRAL	4
2.3	HARDWARE STATUS	5
2.4	TUNER STATUS	6
2.5	SIGNAL STATUS	7
3	DECODER MENU – (2) PARENTAL CONTROL	8
3.1	GLOBAL BLOCKING	8
3.2	PARENTAL GUIDANCE SETTINGS	8
3.3	CHANGING THE PG PIN CODE	9
3.4	CHANNEL BLOCKING	9
4	DECODER MENU – (3) PERSONALISE	10
4.1	ASPECT RATIO	10
4.2	LANGUAGE OPTIONS	11
4.3	SURROUND SOUND	11
4.4	SAFETY NET SETTINGS	11
4.5	DISPLAY TIMEOUT	12
4.6	TRANSPARENCY	12
4.7	AUTOMATIC STANDBY	12
5	DECODER MENU – (4) ADVANCED OPTIONS	12
5.1	NETWORK SET-UP	13
5.2	EQUIPMENT SET-UP	14
5.3	XTRAVIEW SET-UP	16
5.4	PVR CLEAN-UP	16
5.5	DSD UPGRADE	17



The whole of this Viewer's Guide / Manual, including the graphics, menus and information contained herein are the subject of intellectual property rights, including copyright, under domestic law and international conventions. All rights are reserved.

The information in this Viewer's Guide supplements the information supplied with the packaging of the HD PVR and the HD PVR Viewer's Guide (available at www.dstv.com).

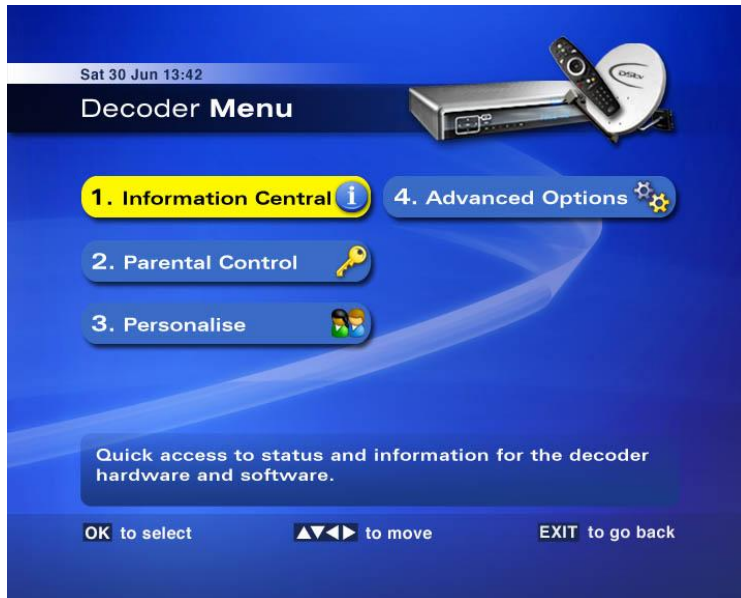
Due to software upgrades, the features and functionalities in this Viewer's Guide may differ from those on your HD PVR.

Version 1.01 (August 2008) pre DTP

e&eo

1 DECODER MENU – MAIN MENU

The decoder menu is your access point for all the settings that control the HD PVR. From installation settings, to information, to parental control. To access the decoder menu, press MENU.



The decoder menu has 4 sections :

Information Central	Quick access to status and information for the decoder hardware and software.
Parental Control	Options that allow you to control the viewing in your home.
Personalise	Personalise decoder defaults to suit your viewing.
Advanced Options	Technical section – including network and configuration set-up as well as the place to go when you need to upgrade the software.

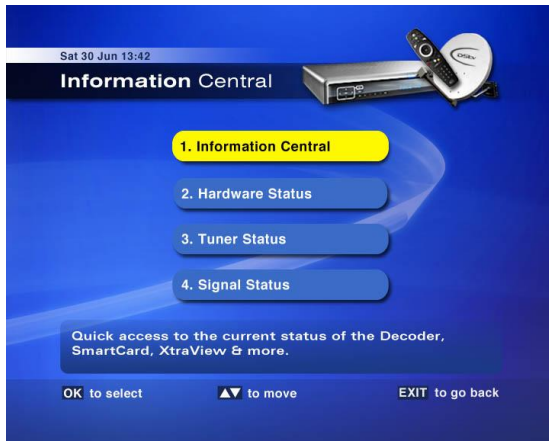


Always look at the bottom of the screen for detailed onscreen instructions on how to navigate the screen, how to edit options, how to save your settings and more.

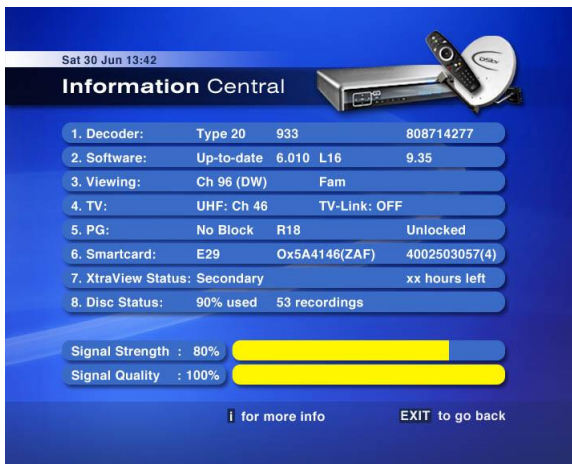
2 DECODER MENU – (1) INFORMATION CENTRAL

The information screens in the decoder menu provide technical information about your HD PVR. This information will be relevant should you need to call the MultiChoice Contact Centre.

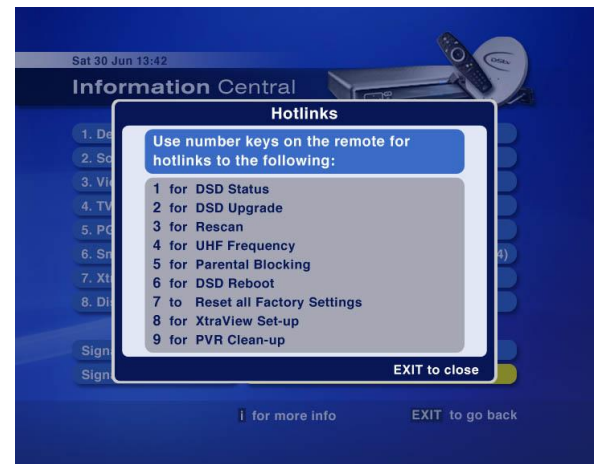
2.1 INFORMATION CENTRAL MENU



2.2 INFORMATION CENTRAL



This screen shows high level information. The number at the end of line 6 is very important when calling the MultiChoice Contact Centre. The 10 numbers displayed before the last number in brackets is your smartcard number. The signal strength and quality are for the channel currently tuned to.



To access the Hotlinks, press **i** on Information Central.

2.3 HARDWARE STATUS

Information on the DSD Status, CA Status and Loader Status.



The two numbers you need to know when checking if you have the latest software are :

DSD Status screen

- The value on the 4th line, **Firmware** is the software version
- The value on the 6th line, **Appl SW** is the i-Guide version

Loader Status screen

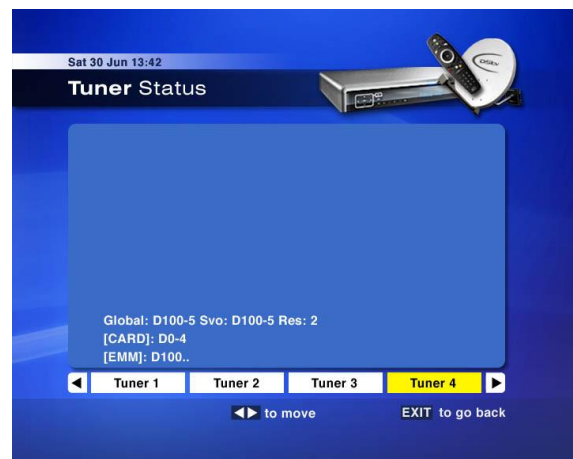
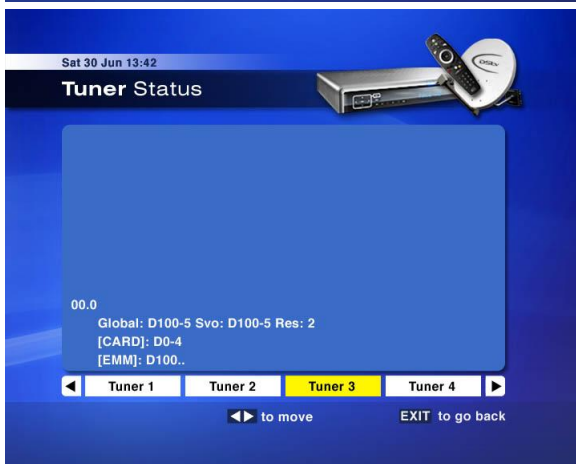
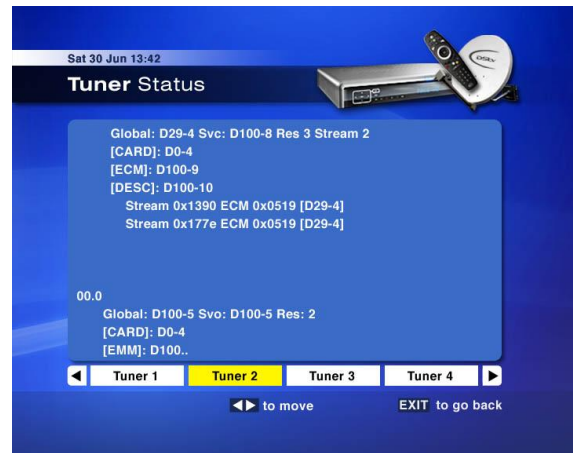
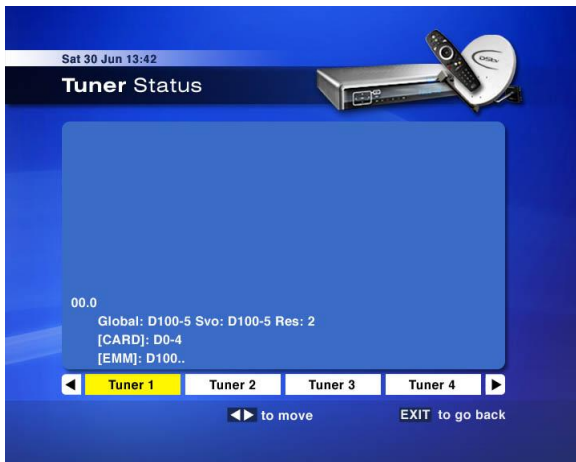
- The value on the 3rd line, after **Load Ver/Var**

The MultiChoice Contact Centre have the latest software details and will be able to compare the information that you give them.

2.4 TUNER STATUS

Information on the status of the 4 tuners. The information displayed is dependent on the current activity of the decoder.

- Tuner 1 – for normal viewing.
- Tuner 2 – used for recording 1
- Tuner 2 – used for recording 2
- Tuner 4 – used for EPG data and control messages..



2.5 SIGNAL STATUS

Information on the status of the 4 tuners. The information displayed is dependent on the current activity of the decoder.



Why do tuner 2 and tuner 3 often not show signal strength?

The tuner signal strength is not exact and differs slightly from unit to unit. It also depends on your dish, LNB, cable type, cable length, connectors (and how well they were fitted), etc. As long as your signal quality is over 70%, the decoder should work correctly.

The quality is affected by breaks in the feed caused by trees or other obstructions, quality of the wired connections, quality of cabling, etc. It should preferably be above 90%. Using multi-switches can slightly deteriorate signal levels.

In addition, different tuners will show different signal strengths, as they are usually tuned to different channels and the signal strength differs from transponder to transponder (a transponder carries a bunch of channels and MCA uses about 11 of them). So, depending to what channel the tuner is tuned, the signal strength could also be different.

Tuners that are not being used tend to show no signal, so don't let that worry you.

If you want to test Tuner 2 and Tuner 3, get two recordings going and then check again.

We also suggest you check the signal strength by tuning to M-Net, Animal Planet, KYKNet and the HD channel (channel 17). If the signal strength is fine on these channels, the decoder should work correctly.

3 DECODER MENU – (2) PARENTAL CONTROL

The HD PVR has a Parental Control feature to control viewing in your home. Access to this feature is controlled by the PG PIN code.



The default PG PIN code is 1234.

If the PG PIN code is entered incorrectly 5 times it is blocked. (The current software allows only 3 incorrect entries). If this happens, you will need to call your nearest MultiChoice Contact Centre to have it reset.

3.1 GLOBAL BLOCKING



Global Blocking Options :

- **No Block** : all programmes are cleared for viewing. Parental levels do not apply.
- **Total Block** : all programmes are blocked and can only be viewed with the valid PG PIN code.
- **Personalise** : Allows you to select what you want to block based on PG settings.

If you select "Personalise", you must select a Parental Guidance Setting (#2).

3.2 PARENTAL GUIDANCE SETTINGS



If you select "Personalise" as the Global Blocking option, you need to select a Parental Guidance Setting.

- **None** : All programmes are cleared for viewing, similar to the "No Block" global blocking option, but allows the user to make use of channel blocking.
- **FAM** : FAM rated programmes are cleared for viewing. All others are blocked.
- **PG 13** : FAM and PG13 rated programmes are cleared for viewing. All others are blocked.
- **16** : FAM, PG13 and 16 rated programmes are cleared for viewing. All others are blocked.
- **18** : FAM, PG13, 16 and 18 rated programmes are cleared for viewing. All others are blocked.

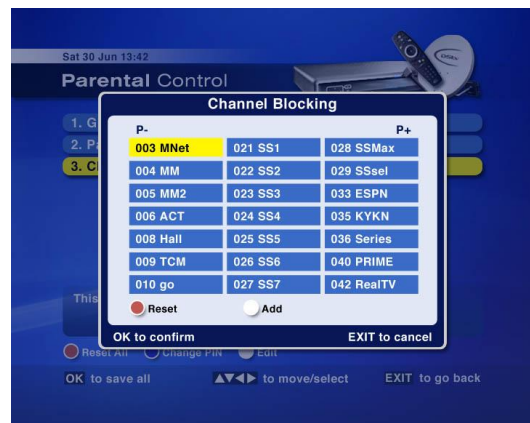
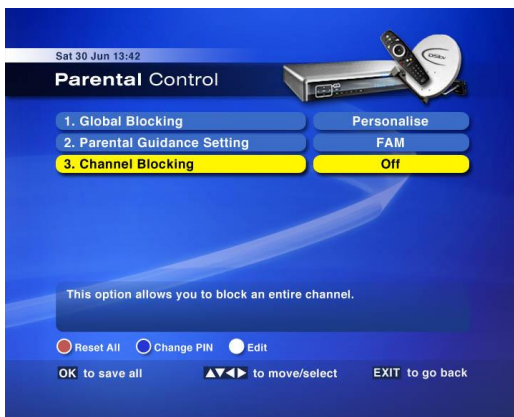
3.3 CHANGING THE PG PIN CODE



Changing the PG PIN Code :

- Press **BLUE** on the Parental Control Menu.
- Enter the old PIN code (remember, the default PG PIN code is 1234). (This is not required in the current release of software.)
- Enter the new PIN code twice (the PIN code can be any 4 digits).
- Press **OK** to confirm the new PIN code.

3.4 CHANNEL BLOCKING



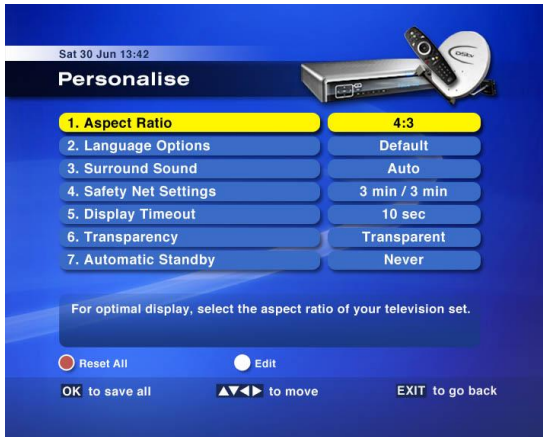
This option differs from Global Blocking as it allows you to block an entire channel, irrespective of age restriction on that channel. The channel can only be viewed on entering the valid PG PIN code.

Press **WHITE** to edit.

- Select the channels you would like to block and press the **WHITE** button to block them.
- Once a channel is blocked, press **WHITE** to unblock it.
- Press **RED** to unblock all channels.
- Press **OK** to confirm your selection.

4 DECODER MENU – (3) PERSONALISE

This menu allows you to personalise certain settings on the HD PVR.



The default settings for this screen are :

1. Aspect Ratio = 16:9
2. Language Options = English – Family
3. Surround Sound = Manual
4. Safety Net Settings = 3 min / 10 min
5. Display Timeout = 10 seconds
6. Transparency = Transparent
7. Automatic Standby = Never

4.1 ASPECT RATIO



MCA only supports non-distorted video modes.

If you have a 16:9 screen : set the TV Set aspect ratio to 16:9.

- For programmes in 16:9 : you will view them in proper 16:9
- For programmes in 4:3 : you will get the pillarbox view, ie. black lines on the sides, but normal sized (not fat) actors / presenters.
-

If you have a 4:3 screen , set the TV aspect ratio to 4:3. You then have a choice for the Widescreen setting :

- Cropped : widescreen content will be displayed full screen height, but with the sides chopped off, or
- Letter Box: you will see the whole widescreen picture, but with black bars at the top and bottom on the screen, ie. you will see a smaller, but nevertheless still widescreen picture.

Note : some 4:3 content e.g. movies is broadcast in 4:3 letter box format - that will always display as letter boxed 16:9 on a 4:3 screen and with a black frame right round on a 16:9 screen.

Last, but not least : don't change your decoder settings once it has been set to your preference - rather change the TV zoom, etc. if really required. In this way you will get the optimum picture quality.

4.2 LANGUAGE OPTIONS

This option allows you to specify 2 language preferences for the audio soundtracks available on certain channels and programmes.



Press **WHITE** to edit and use the arrow keys to make your selection, then press **OK**.



The default language is your first preference. If neither of your selected channels are available, the channel's first option will be presented.

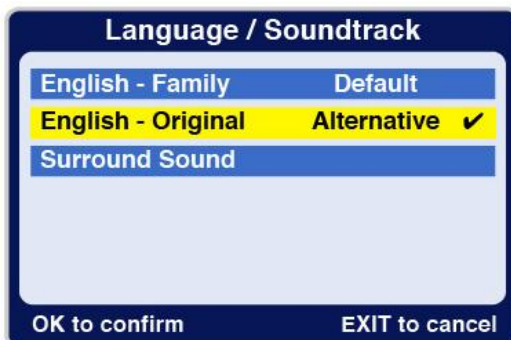


You can change the actual soundtrack that you listen to when watching TV or a recording, by pressing the LANGUAGE button and selecting from the options available.

4.3 SURROUND SOUND

There are two setting options :

- Manual : if surround sound is available when watching Live TV, you will need to manually select it by pressing **LANGUAGE** and selecting Surround Sound on the pop-up.



- Auto : if surround sound will automatically be detected and used when available.

4.4 SAFETY NET SETTINGS

When you schedule a recording, the HD PVR automatically adds 3 minutes to the beginning and 10 minutes to the end of the recording (so long as the safety net doesn't clash with other existing recordings).

Here is where you change the default settings for the safety net. Press **WHITE** to edit, select the safety net settings required and press **OK**.



The new setting will only take effect on recordings scheduled after you made the change, ie. recordings already scheduled retain the previous safety net settings.



The PVR will eliminate the safety net to avoid conflict.
 Example : you have two recordings set from 10:00-11:00 (09:57-11:10 with default safety net).
 If you want to schedule a recording for 11:00 – 12:00, the PVR drops the safety net of one of the recordings to ensure that this recording can be accommodated. It will only delete the safety net at the time it needs to start the next recording.

4.5 DISPLAY TIMEOUT

This option allows you to customise the display period for the i-Plate and onscreen PVR icons. You can set it for anywhere between 1 and 20 seconds.

4.6 TRANSPARENCY

This option allows you to choose between a transparent and opaque (solid) display of the i-Plate and Channel Grid and Decoder Menu.

4.7 AUTOMATIC STANDBY

To extend the lifespan of the HD PVR, you have the option to disable the hard drive during periods when you are not using the PVR. When the HD PVR is in automatic standby, the hard disk goes to "sleep". Recordings scheduled for when the HD PVR is in automatic standby are not impacted and will take place.



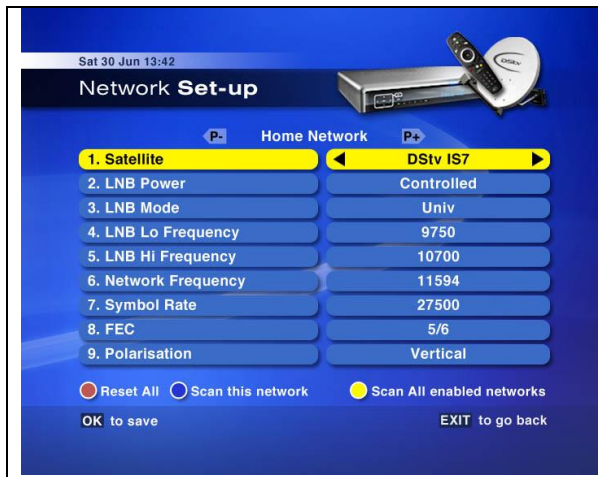
MultiChoice recommends that you currently set the HD PVR Automatic Standby setting to "Never" and manually put the decoder into standby when you have finished viewing.

5 DECODER MENU – (4) ADVANCED OPTIONS

Access to the Advanced Options requires the installation PIN which is 9949.



5.1 NETWORK SET-UP



The default settings for this screen are :

1. Satellite = DStv IS7
2. LNB Power = Controlled
3. LNB Mode = Univ
4. LNB Lo Frequency = 9750
5. LNB Hi Frequency = 10700
6. Network Frequency = 11594
7. Symbol Rate = 27500
8. FEC = 5/6
9. Polarisation = Vertical

5.1.1 Satellite

Options : DStv IS7, DStv IS10, DStv W4, Other.

As you scroll the options, you will note that options 2 – 9 below change values and sometime are greyed out (meaning the values are not selectable).



Customers in SA,
should select DStv IS7.



For customers with a
SatCR installation, select
Other, then change #3 (LNB
Mode) to SatCR.
Press OK to save changes.

- 5.1.2 LNB Power
Options : 13v, 18v, Controlled, Off.
- 5.1.3 LNB Mode
Options : Univ, Std, SatCR.
- 5.1.4 LNB Lo Frequency
Options : Any number in the range of 0 - 9999
- 5.1.5 LNB Hi Frequency
Options : Any number in the range of 0 - 9999
This frequency must always be higher than the low frequency.
- 5.1.6 Network Frequency
Options : Any number in the range of 0 - 9999
- 5.1.7 Symbol Rate
Options : Any number in the range of 0 - 9999
- 5.1.8 FEC
Options : 1/2, 2/3, 3/4, 5/6, 7/8.
- 5.1.9 Polarisation
Options : Vertical, Horizontal.
- 5.1.10 Other – Scanning options.

5.2 EQUIPMENT SET-UP



The default settings for this screen are :

1. TV Type = PAL 1
2. High Definition Output = Original
3. TV Link = Disabled
4. UHF Tuning = 63
5. Lip-sync Delay = 0
6. Audio Output = Variable
7. SCART Output = Composite
8. Local Time = Local Time

- 5.2.1 TV Type
 - PAL1
 - PAL BG
- 5.2.2 High Definition Output (HDMI)
 - Original

The HD PVR will automatically select the resolution of the display to match the resolution of the broadcast.

So, if the broadcast is in 576i and the TV supports 576i then PVR will use 576i otherwise it will use the default resolution, if the broadcast is 720p and the TV supports 720p then again, the PVR will use 720p otherwise it will use the default resolution.

- Native
When the HD PVR is connected to a HD TV, the TV sends HD PVR the list of supported resolutions.

The native resolution is the term given to the optimal resolution (best display & performance). The TV will communicate this optimal resolution to the decoder.

If the HD PVR is set to Native, it will use this "best" resolution (relative to TV) for all broadcasts. Broadcasts of higher resolutions are downconverted, and broadcasts of lower resolutions are upconverted.

NOTE : In the case where the TV does not indicate it's native resolution, the PVR will use the highest supported resolution.

- 576i (PAL)
- 576p
- 720p
- 1080i

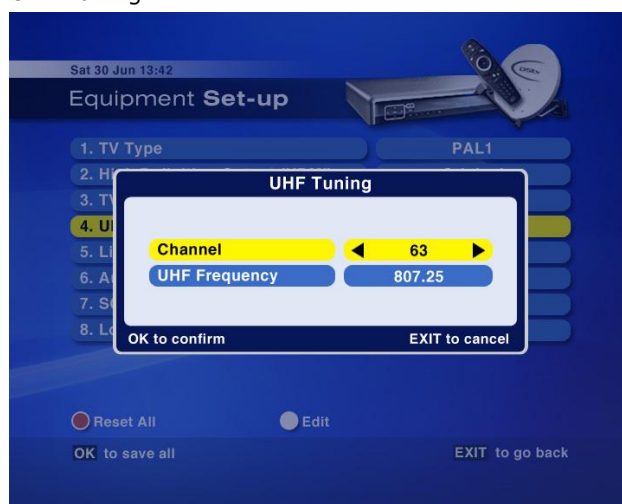
Fixed resolutions (576i, 576p, 720p, 1080i)

The HD PVR will send all broadcasts in this fixed resolution to the TV, and this resolution only. Broadcasts of higher resolutions are downconverted, and broadcasts of lower resolutions are upconverted.

5.2.3 TV Link

The TV Link will be disabled unless the the Xtraview Communication Port and Remote Mode have been selected in the Xtraview Set-up Screen.

5.2.4 UHF Tuning



5.2.5 Lip-sync Delay

Audio video sync problems are commonly caused when a significant amounts of video processing is performed on the video component of a channel by a display device. The lip-synch issue can be corrected by adjusting the lip synch setting.

5.2.6 Audio Output

- Variable
- Fixed

Variable audio output allows you to adjust the volume while viewing whereas fixed only allows the volume to be muted. Fixed volume is recommended if content is being recorded to an external device such as a video or DVD, as it assures that the recorded volume is consistent.

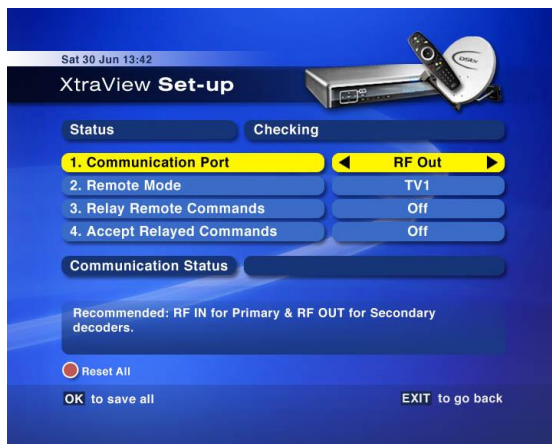
5.2.7 SCART Output

- Composite
- S-Video
- RGB

5.2.8 Local Time

If the time displayed on the front panel of the HD PVR or on the i-Plate does not correspond with the actual time, set the local time here.

5.3 XTRAVIEW SET-UP



The default settings for this screen are :

1. Communication Port = RF Out
2. Remote mode = TV1
3. Relay Remote Commands = Off
4. Accept Relayed Commands = Off

5.4 PVR CLEAN-UP

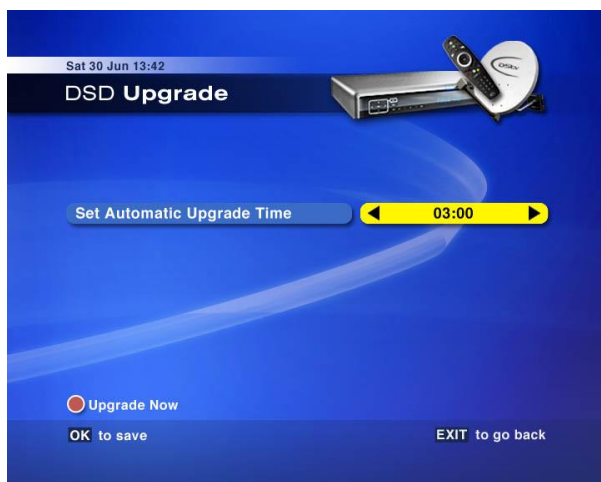
This option allows you to delete the Playlist, PVR Schedule (Scheduled Recordings & Reminders) or All of these.



On selecting the required option, a confirmation pop-up will be displayed. Once you have pressed OK to start the clean-up, a progress bar is displayed. DO NOT interrupt the process.

5.5 DSD UPGRADE

This option allows you to upgrade the decoder software and also allows you to set a time for automatic decoder upgrades.



At the time you specify in this option, the decoder will automatically check for software, and if available, initiate a download.

----- end -----